



c-pace

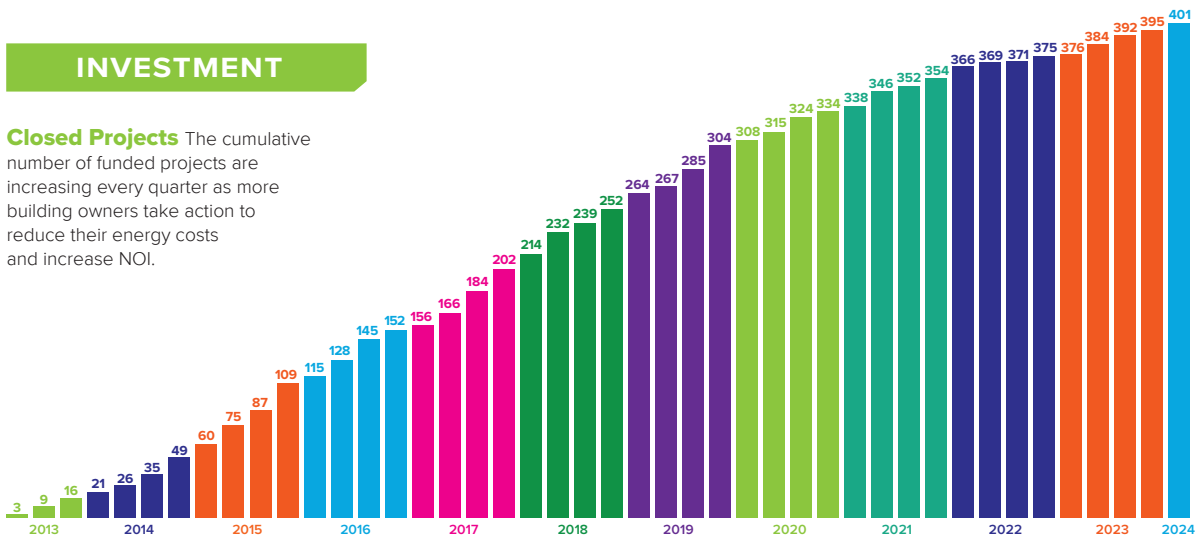
Q1 24

C-PACE (Commercial Property Assessed Clean Energy) is an innovative program that makes green solutions more accessible and affordable. Thanks to the building owners, contractors and other stakeholders who are using the program to accelerate the green energy movement – Connecticut’s C-PACE program has seen growing investment, enabled diverse energy saving improvements, and has made a significant impact on the community. **This quarterly dashboard tracks these measures:**



INVESTMENT

Closed Projects The cumulative number of funded projects are increasing every quarter as more building owners take action to reduce their energy costs and increase NOI.



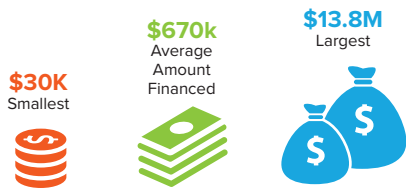
C-PACE is Growing
The total amount of project financing continues to grow as more energy saving projects are closed.

\$268.8M

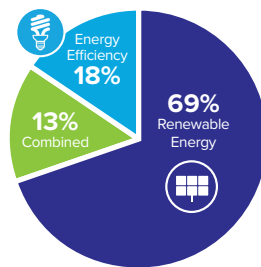
total closed project financing

IMPROVEMENTS

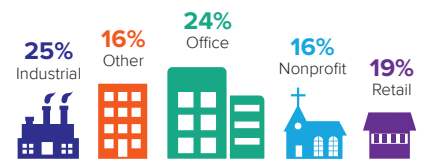
All Sizes of Projects
C-PACE can bring virtually any green energy project, small or large, from a vision to a reality.



All Types of Green Energy From simple boiler replacements to solar C-PACE works for any upgrade that reduces energy costs.



All Shapes of Properties
From manufacturing facilities to YMCAs all commercial properties are eligible to use C-PACE for an energy saving project.



IMPACT

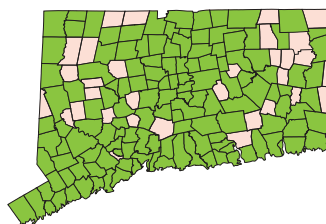
Making Green Work

112 contractors have completed at least one C-PACE project



With financing available for hard and soft costs, C-PACE contractors can design comprehensive projects and gain access to new customers.

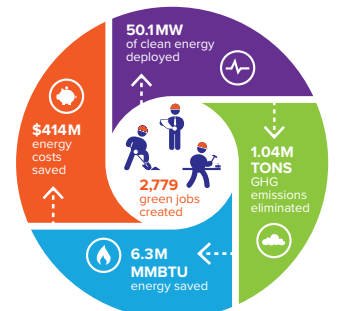
More Green Communities Nearly 140 participating cities and towns can use C-PACE to fuel economic development, make their community cleaner and help their citizens thrive.



The Power of Green Energy

C-PACE projects are creating jobs, saving businesses millions of dollars, and supporting a cleaner, healthier environment.

*Energy savings based on projections



Take control of your energy costs. Connect with us today. 860.257.2176 / www.cpace.com